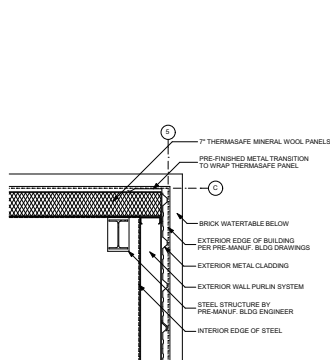
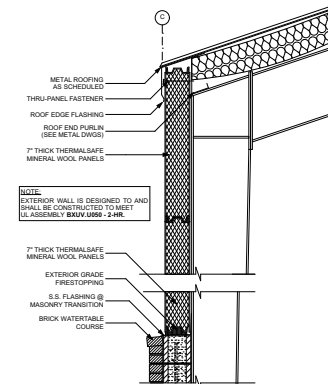


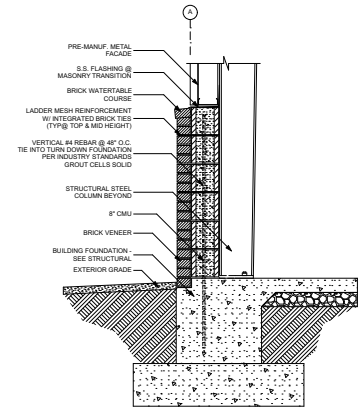
26
A-101 FLOOR PLAN - 1ST FLOOR
SCALE: 3/8" = 1'-0"



26
A-101 CORNER @ RATED WALL
SCALE: 3/4" = 1'-0"



21
A-101 EXT RATED WALL
SCALE: 3/4" = 1'-0"



11
A-101 EXT MASONRY KNEEWALL
SCALE: 3/4" = 1'-0"

PLAN GENERAL NOTES

1. EXTERIOR SHELL BUILDING DESIGN, DIMENSIONS, AND DOOR LOCATIONS ARE SHOWN FOR DIAGNOSTIC PURPOSES ONLY. SEE STRUCTURAL SHELL DRAWINGS FOR EXACT DIMENSIONS.
2. BUILDING RIGHT ELEVATION PLAN NORTH WALL IS APPROXIMATELY 9' FROM THE PROPERTY LINE AND IS BEING FIRE RATED TO TWO HOURS FOR MAXIMUM FUTURE BUILDING VERSITILITY. SEE DETAILS AND US ASSEMBLES FOR FURTHER INFORMATION.
3. PRE-MANUFACTURED BUILDING DESIGNER TO PROVIDE ALL NECESSARY BLOCKING STRUCTURE TO SUPPORT EXTERIOR CANOPY OVER FRONT DOOR.

LIFE SAFETY GENERAL NOTES

1. SEE SHEET A-001 FOR ILL CODE DATA INCLUDING BUILDING CONSTRUCTION AREA, OCCUPANT LOADS, BUILDING EXITING, AND FIRE DETECTION/SUPPRESSION.
2. REFER TO DESIGN-BUILD ELECTRICAL PERMIT SUBMISSION DRAWINGS FOR EXIT LIGHTS
3. REFER TO FLOOR PLAN FOR FIRE EXTINGUISHER CABINET LOCATIONS

LIFE SAFETY INFO

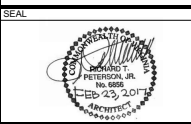
BUILDING IS NON SPRINKLERED
AREA SQUARE FOOTAGE: 5,500 SF GROSS
OCCUPANT LOAD: UNOCCUPIED SHELL STRUCTURE
TRAVEL DISTANCE: 73'-0" MAX (MAXIMUM = 200'-0")
DISTANCE BETWEEN EXITS: 116'-0"
ACTUAL TRAVEL DISTANCE: (116'-0"/2) = 58'-0"

PLAN KEY NOTES

1. AREA OF CONCRETE FLOOR SLAB TO REMAIN OPEN OR FUTURE PLUMBING ROUGH-IN.
2. THERMALSAFE MINERAL WOOL PANELS DESIGNED TO MEET 2-HR FIRE RATING. SEE DETAILS ON THIS SHEET.
3. LOCATIONS OF WALL MOUNTED PORTABLE FIRE EXTINGUISHER.



CONSULTANTS



3317 ROSEDALE AVENUE
3317 ROSEDALE AVENUE
RICHMOND, VIRGINIA 23227

MARK	DATE	DESCRIPTION

PROJECT NO.: 01680.00
MODEL FILE: 01680.3317 ROSEDALE AVENUE.PLT
START DATE: XXXXXX
DRAWN BY: XXX
CHECKED BY: XXX

COPYRIGHT © CORNERSTONE ARCHITECTS. ALL RIGHTS RESERVED.
THIS DOCUMENT MAY NOT BE USED FOR PRODUCTION WITHOUT
WRITTEN PERMISSION BY JONATHAN PETERSON ARCHITECTS

SHEET TITLE
FLOOR PLAN

A-101

Z:\01680.00\3317 Rosedale Ave\Output\Drawings\PLN\01680.3317 ROSEDALE AVENUE.dgn - Thursday, February 23, 2017, 1:20 PM - egackert@ush