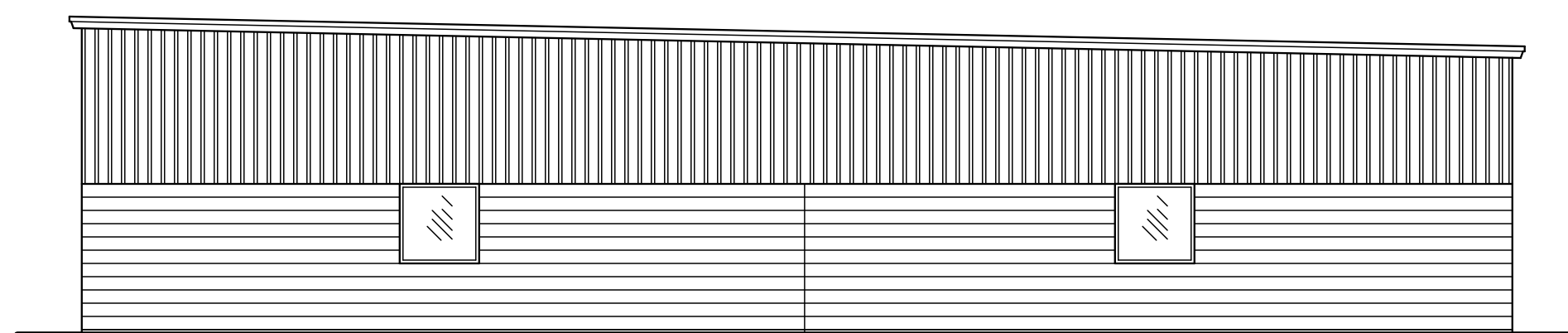


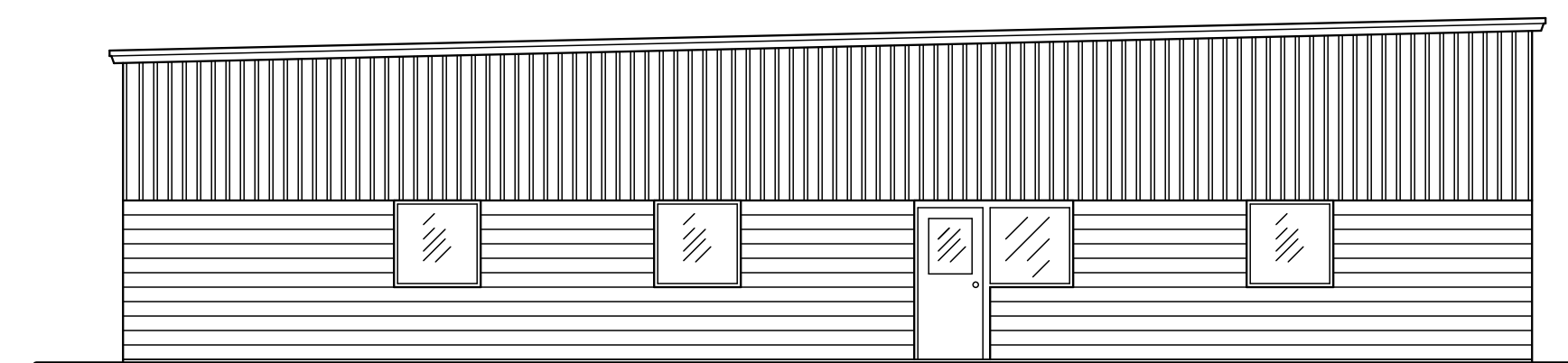
EAST ELEVATION

SCALE: 1/8" = 1'-0"



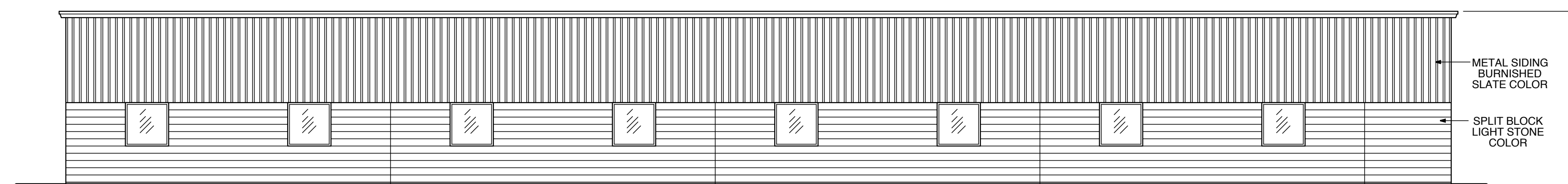
SOUTH ELEVATION

SCALE: 1/8" = 1'-0"



NORTH ELEVATION

SCALE: 1/8" = 1'-0"



WEST (TURNER ROAD) ELEVATION

SCALE: 1/8" = 1'-0"

**TURNER ROAD
COMMERCIAL BUILDING**

2665 TURNER ROAD
CHESTERFIELD COUNTY, VIRGINIA

COUNTY SITE PLAN #05PR0132

12/7/05